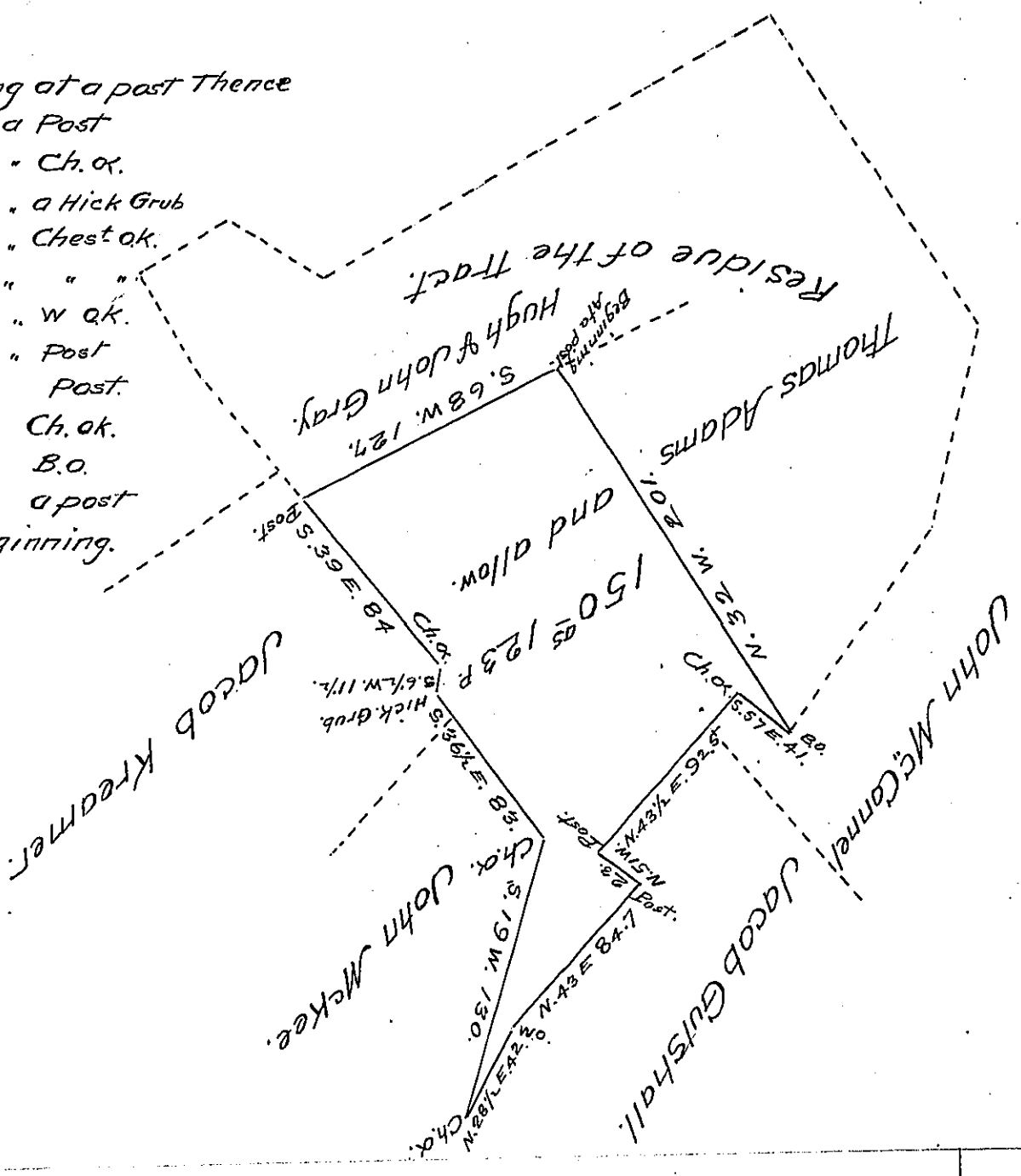


FORM NO. 1.

Field Notes Beginning at a post Thence

- S. 68 W. 127 To a Post
  - S. 39 E. 84 " " Ch. α.
  - S. 6 1/2 W. 11 1/2 " " a Hick Grub
  - S. 36 1/2 E. 83 " " Chest ok.
  - S. 19 W. 130 " " " "
  - N. 28 1/2 E. 42 " " W ok.
  - N. 43 E. 84.7 " " Post
  - N. 51 W. 23. " " Post.
  - N. 43 1/2 E. 92.5 " " Ch. ok.
  - S. 57 E. 41. " " B.O.
  - N. 32 W. 201. " " a post
- at the Place of Beginning.



Draft of a tract of land situate in Toboyne Township in Perry County Containing 150<sup>95</sup> 123 P & allowance of land surveyed for William A. Morrison atty. in fact for James R. Campbell now a resident of the state of Kansas Thomas Adams and John S. Swartz the 21<sup>st</sup> day of July 1870 being a part of a larger tract of 377<sup>95</sup> 23 P & allowance Surveyed on a warrant to John Smith dated — June 2<sup>nd</sup> 1794. A.N.

S. H. Galbraith Co.S.

To Hon. Jacob M. Campbell  
Surveyor General

IN TESTIMONY that the above is a copy of the original remaining on file in the Department of Internal Affairs of Pennsylvania, made conformably to an Act of Assembly approved the 16th day of February 1833, I have hereunto set my hand and caused the Seal of said Department to be affixed at Harrisburg, this fifth day of April 1907.

*Isaac D. Brown*  
Secretary of Internal Affairs.